

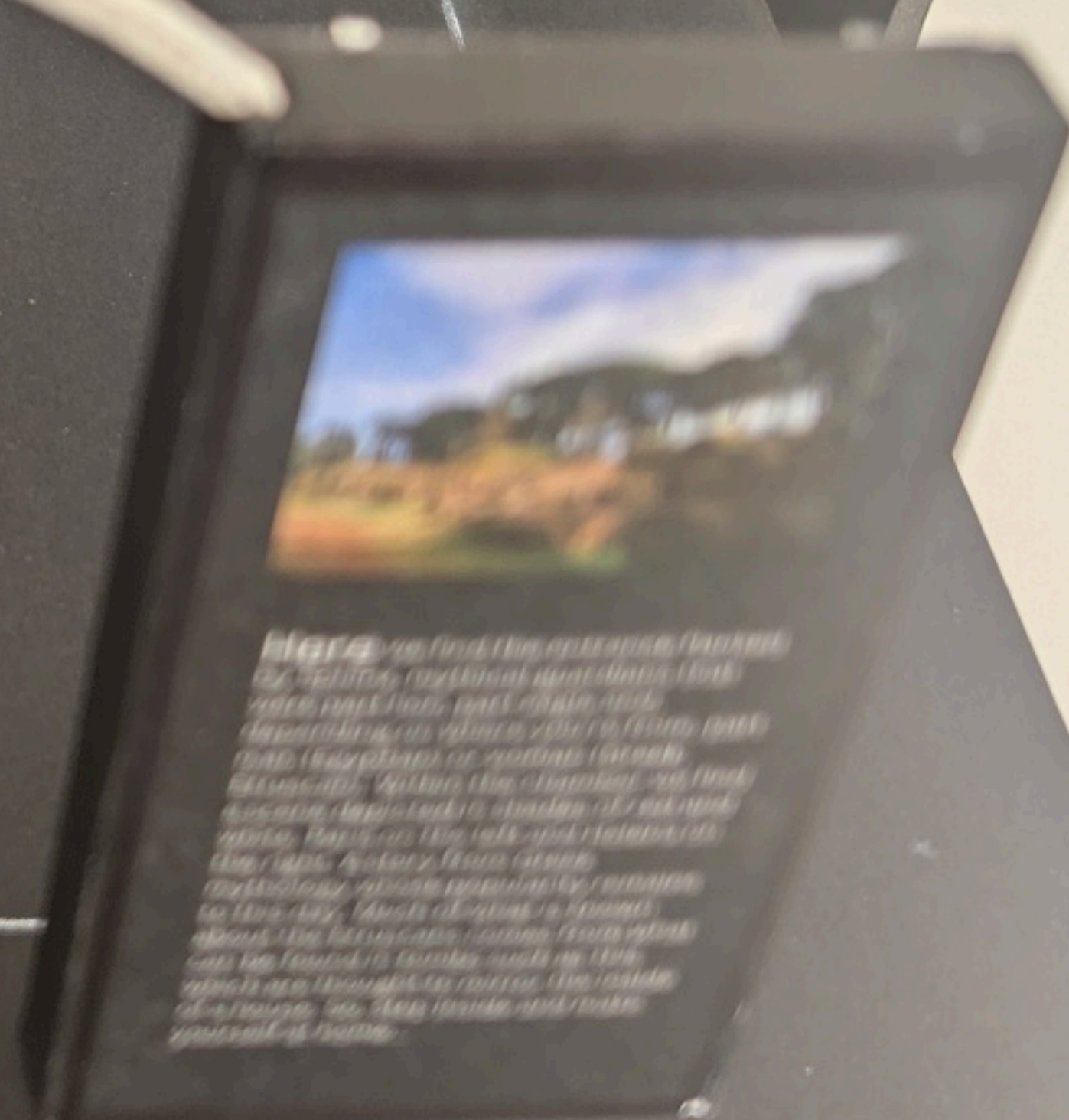
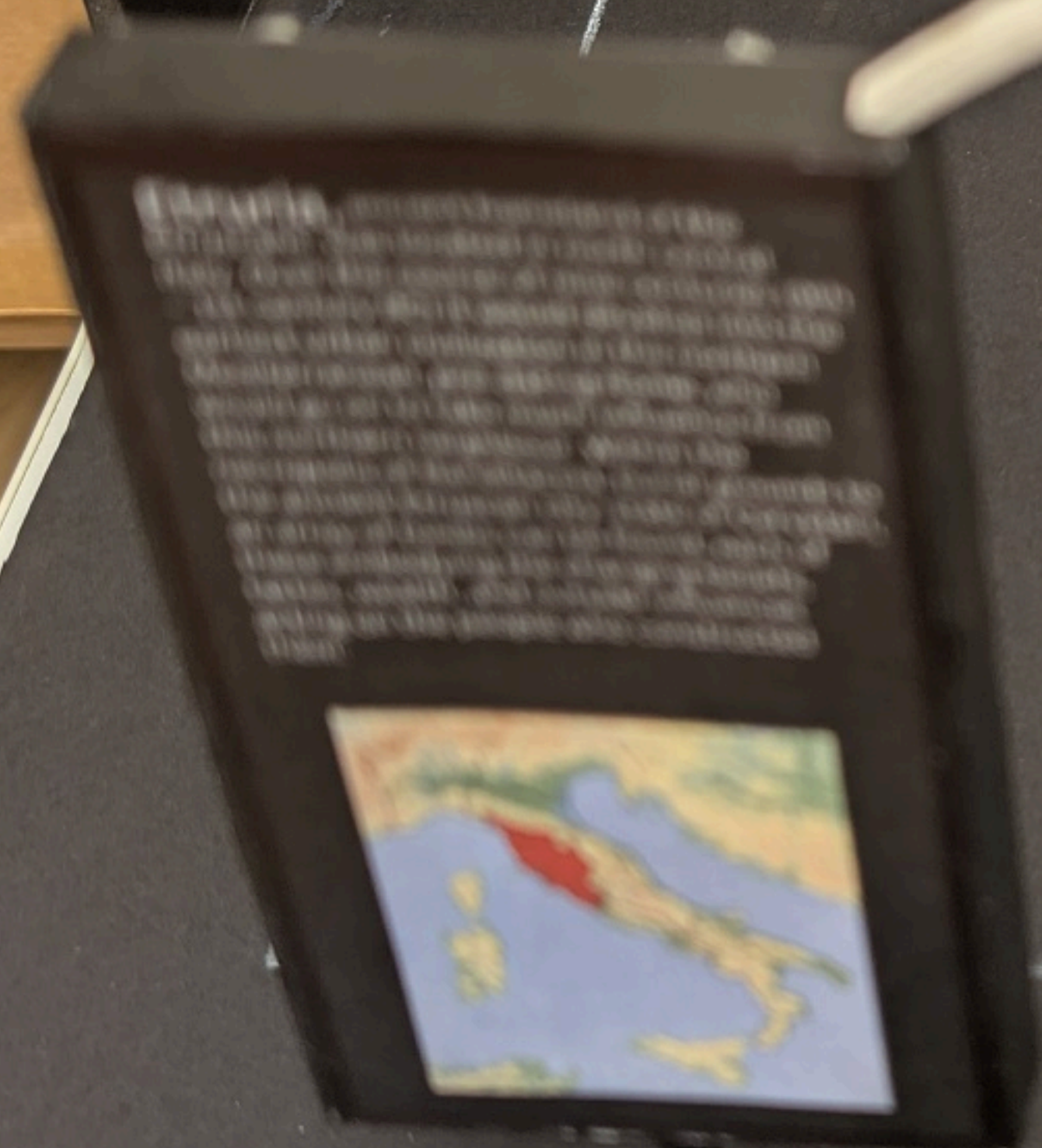
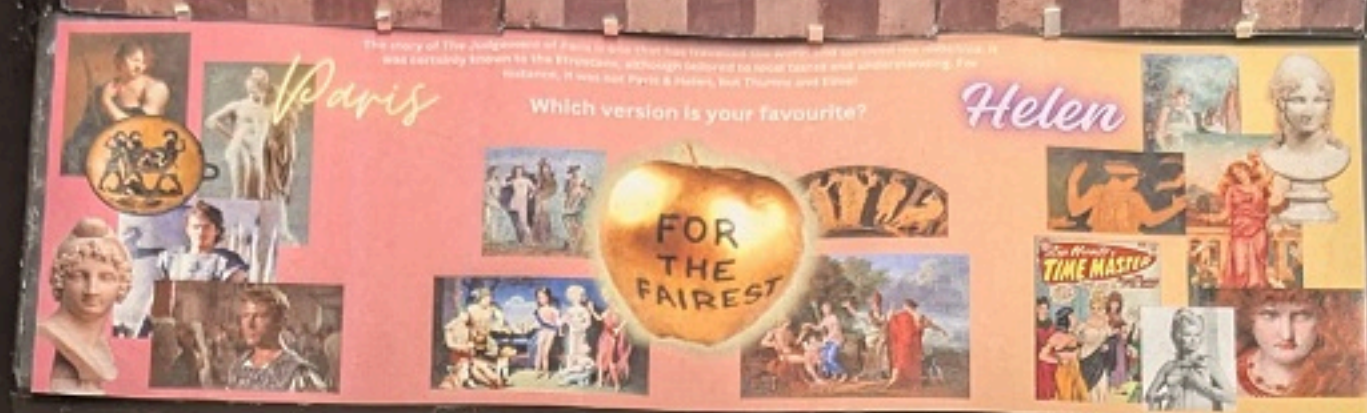


1889, 04101-5
FIVE PAINTED TERRACOTTA PLAQUES FROM AN ETRUSCAN TOMB DISCOVERED AT THE BANDITACCIA CEMETERY NEAR CERVETERI, ITALY. THEY DATE TO AROUND 560-550 BC. TWO PLAQUES DEPICT SPHINXES, HYBRID CREATURES SYMBOLIZING GUARDIANSHIP; THESE WERE INSPIRED BY EGYPTIAN MOTIFS BUT POPULARIZED IN GREEK ART, A REFLECTION OF ETRUSCAN ARTISTRY INFLUENCED BY EGYPTIAN AND GREEK CULTURES. THE OTHER THREE PLAQUES DEPICT THE JUDGMENT OF PARIS, A STORY FROM GREEK MYTHOLOGY, HIGHLIGHTING THE ETRUSCANS' EXPOSURE TO, AND INVOLVEMENT IN, BROADER TRENDS. THESE PLAQUES DEMONSTRATE ETRUSCAN CREATIVITY AND THE RICH CULTURAL EXCHANGES OCCURRING WITH THEIR NEIGHBOURS.

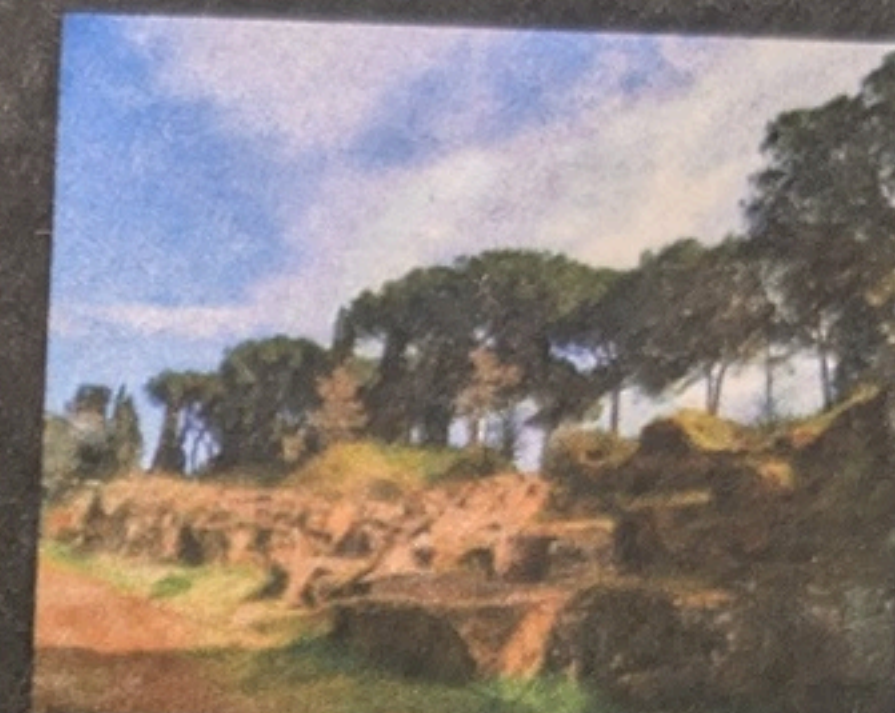
ETRURIA, ANCIENT HOMELAND OF THE ETRUSCANS, WAS LOCATED IN NORTH CENTRAL ITALY. BETWEEN THE 9TH AND 1ST CENTURIES BC, ETRURIA DEVELOPED INTO THE EARLIEST URBAN CIVILIZATION IN THE NORTHERN MEDITERRANEAN AND WAS A MAJOR INFLUENCE ON THE ROMANS. DISCOVERED NEAR THE IMPORTANT CITY-STATE OF CERVETERI, WAS THE NEROPOLIS OF BANDITACCIA, WHICH CONTAINED AN ARRAY OF TOMBS, EACH EMBODYING THE CHANGING BELIEFS, TASTES, WEALTH, AND OUTSIDE INFLUENCES ACTING ON THE PEOPLE WHO CONSTRUCTED THEM. INSIDE THIS BURIAL CHAMBER WE FIND THE ENTRANCE FLANKED BY SPHINX, MYTHICAL GUARDIANS THAT WERE PART LION, PART EAGLE, AND PART HUMAN. WITHIN THE CHAMBER WE FIND A SCENE DEPICTED IN SHADES OF RED AND WHITE. PARIS ON THE LEFT AND HELEN ON THE RIGHT, ACTING OUT THE JUDGEMENT OF PARIS, A STORY FROM GREEK MYTHOLOGY WHOSE POPULARITY REMAINS TO THIS DAY. MUCH OF WHAT IS KNOWN ABOUT THE ETRUSCANS COMES FROM WHAT CAN BE FOUND IN TOMBS SUCH AS THIS WHICH ARE THOUGHT TO MIRROR THE INSIDE OF A HOUSE. SO, STEP INSIDE AND MAKE YOURSELF AT HOME...



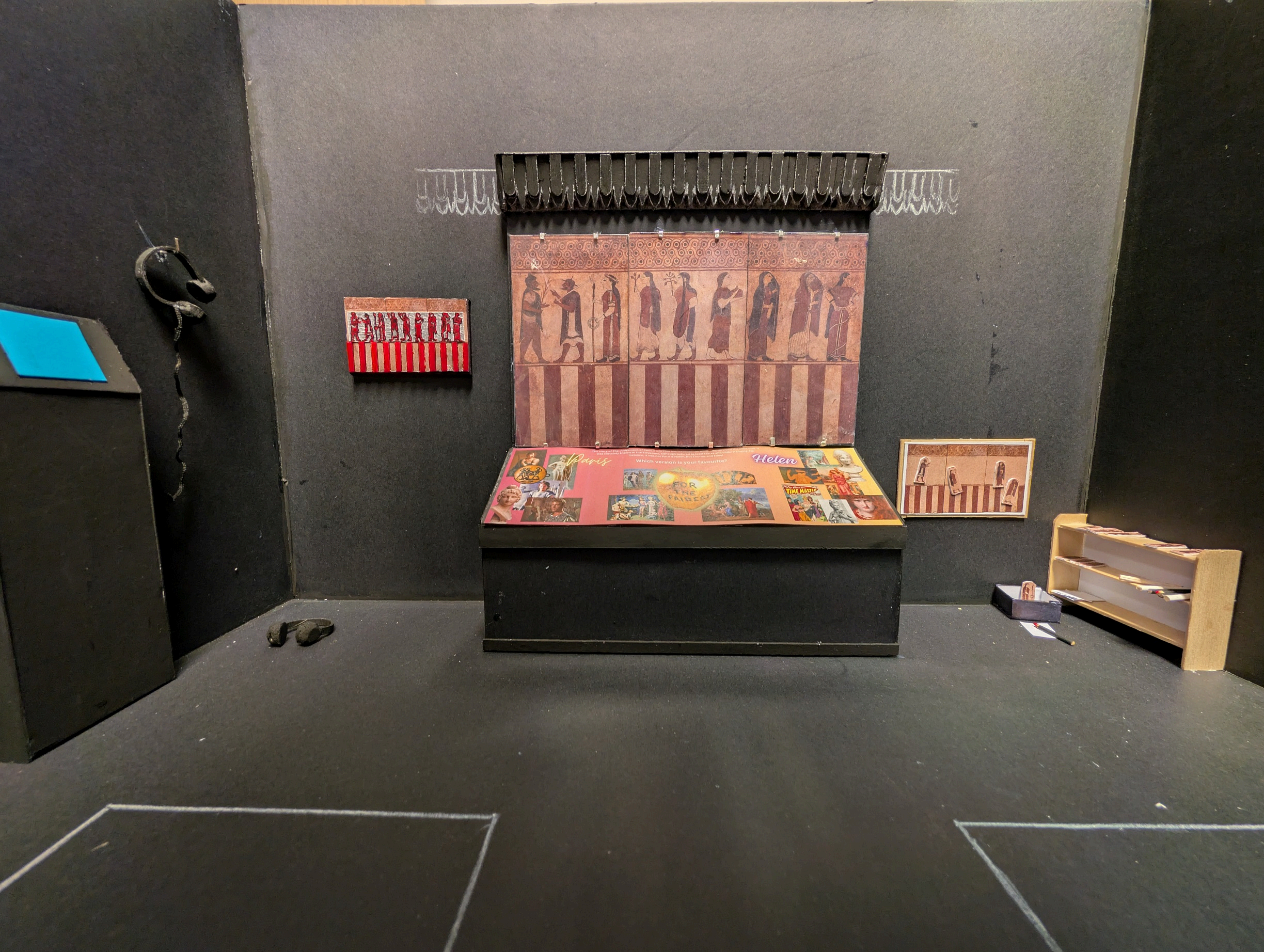




Etruria, ancient homeland of the Etruscans, was located in north central Italy. Over the course of nine centuries (9th – 1st century BC) it would develop into the earliest urban civilization in the northern Mediterranean, pre-dating Rome, who would go on to take much influence from this northern neighbour. Within the necropolis of Banditaccia, burial grounds to the ancient Etruscan city-state of Cerveteri, an array of tombs can be found, each of these embodying the changing beliefs, tastes, wealth, and outside influences acting on the people who constructed them.



Here we find the entrance flanked by Sphinx, mythical guardians that were part lion, part eagle and, depending on where you're from, part man (Egyptian) or woman (Greek, Etruscan). Within the chamber we find a scene depicted in shades of red and white. Paris on the left and Helena on the right. A story from Greek mythology whose popularity remains to this day. Much of what is known about the Etruscans comes from what can be found in tombs such as this which are thought to mirror the inside of a house. So, step inside and make yourself at home...





The story of The Judgement of Paris is one that has travelled the world and survived the millennia. It was certainly known to the Etruscans, although tailored to local tastes and understanding. For instance, it was not Paris & Helen, but Thurns and Elnel

Paris

Which version is your favourite?

Helen





Which version is your favourite?

Helen

FOR THE FAIREST

TIME MASTER

A collage of images related to Helen of Troy. It includes a golden apple with the text "FOR THE FAIREST", a bust of Helen, a scene from the Trojan Cycle, and a scene from the Trojan Cycle. The text "Which version is your favourite?" is at the top, and "Helen" is in the center. "FOR THE FAIREST" is in a large, stylized font, and "TIME MASTER" is in a smaller font.

